

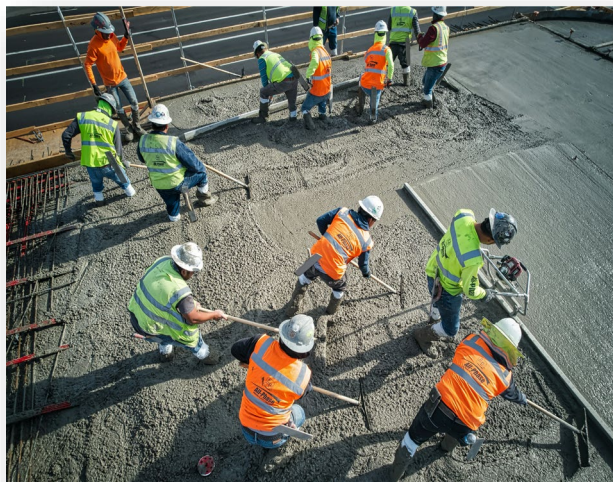


Seasonal Hazards - SPRING Week of: 03/23/25 - 03/29/25

Spring marks the start of longer days and warmer weather. It also marks an increase in construction activities, and this brings some additional hazards that must be given consideration on our worksites.

Controls

- Dress in layers that can be removed. Use waterproof clothes when necessary and pack spare dry clothes. Take warm up breaks, when required, and stay hydrated. Apply sunscreen when working outside.
- Ensure treads of safety footwear are in good condition and kept free of dried mud. Walk cautiously in wet or muddy conditions. Evaluate ground conditions prior to operating equipment
- Inspect trenches daily and after changes in weather. Utilize trench boxes.
- Regularly inspect the ground supporting any temporary structures or equipment (i.e. scaffolds). Use sills to more evenly distribute load.
- Drive to road conditions. Keep windows clear of mud and grime. Bring spare windshield wash.
- Use proper tools – do not use power tools that are not rated for use in wet environments. Use only GFCI. Don't walk through standing water without assessing ground conditions and potential electrical hazards.
- Incorporate a stretching routine, prior to start of work.
- Ensure that pre-season inspections and maintenance are carried out for all equipment.





Date	Topic	Seasonal Hazards - Spring
------	-------	---------------------------

Location

Trainer

Start Time	End Time
------------	----------

Signature of Trainer:_____

A photograph showing two construction workers in safety gear (hard hats, gloves) pouring concrete into large, grey, rectangular forms. The worker on the left is using a long metal rod to guide the pour, while the worker on the right is using a shovel. The background shows a large, white, curved structure, possibly a tunnel or a large storage container.

Form can be found: \Safety\Safety\Training\Toolbox Talks\Toolbox Talk – 032025 Seasonal Hazards-Spring