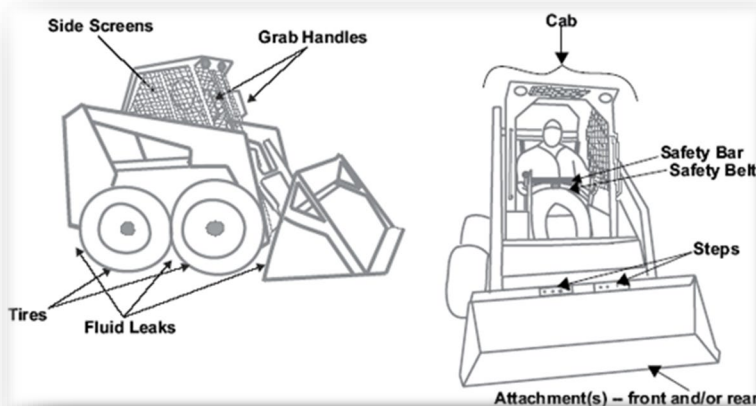


Title of Training	SKID STEER TRAINING W/ ATTACHMENTS	
Equipment Info.	MAKE/TYPE/SIZE/MODEL	
Material Needed	Operations Manual-Skid Steer for Hands on Training- Open Area to Perform Hands On-Orange Cones for Serpentine Course	<b>Hands On Session-</b> All participants will be required to perform a pre-operational inspection and operating control demonstration. A work assignment must be performed using the loader bucket in a variety of applications, while traveling and turning with the bucket loaded and empty.

### Loader Skid Steer Training



### OPERATION

#### Understanding the machines capabilities and the safety procedures while in use.

- NEVER operate this or any other equipment under the influence of drugs or alcohol.
- Prior to driving / using this equipment an operator should always read all manufacturer’s manuals about the skid steer and its attachments.
- Familiarize yourself with warning devices, gauges, and controls. Study operating procedures outlined in the manual.
- The seat belt and/or seat bar should be employed whenever you are operating a skid steer.
- Check for obstacles or soft soil conditions in the work area.
- Check for overhead power lines.
- Operators must NEVER permit riders on skid steer loaders or any of the attachments.
- Adjust speed to suit working conditions and terrain. Avoid sudden stops, starts, or turns.
- Except for the operator, employees should not be near the machine or its attachments when it is operating.
- NEVER attempt to operate the steering levers or any other hydraulic controls while standing outside of the cab. Hydrostatic drive means that the skid steer will respond instantly when the levers are engaged.
- Try to avoid driving over rough and “potholed” surfaces.
- Use a spotter whenever work is being done in a high traffic, tight, or load areas or anywhere that may require a spotter.
- Road travel with a skid steer is not recommended unless proper spotting and traffic control is used.
- When using a skid steer as a tie off point for fall protection all LOTO procedures must be followed. This procedure can be found in the SH&E section 12, Appendix I

Trainee Name (print)		Signature of Trainee	
Instructor Name		Date of Training	
Scan To:	Safety/Training/Equipment/Skid Steer Safety w/Attachments-YYYY-MM-DD		
Revision # 002-16 KRR			

Title of Training	SKID STEER TRAINING W/ ATTACHMENTS	
Equipment Info.	MAKE/TYPER/SIZE/MODEL	
Material Needed	Operations Manual-Skid Steer for Hands on Training- Open Area to Perform Hands On-Orange Cones for Serpentine Course	<b>Hands On Session-</b> All participants will be required to perform a pre-operational inspection and operating control demonstration. A work assignment must be performed using the loader bucket in a variety of applications, while traveling and turning with the bucket loaded and empty.

## OPERATION continued

- Balance is the key to the stability and turning capability of a skid steer. With no load in the bucket, roughly two-thirds of the weight is on the rear axles. Weight shifts to the front wheels when the bucket is loaded.
- Overloading can make a skid steer excessively front heavy. This reduces stability and handling response. Don't exceed a loader's rated operating capacity.
- Operation of controls becomes almost instinctive for an experienced skid steer driver. Inexperienced operators can become confused because of having to perform several functions at one time. If this happens, it is usually best to remove hands and feet from the controls. All machine functions will stop when pressure on the controls is released.
- NEVER remove the rollover protective structure from a skid steer. Keep side screens in place-fatal crushing injuries have occurred when individuals were caught between the loader arms and the skid steer frame on "unscreened" machines.
- Always make sure that attachment locking devices are in place, even if you are switching attachments for only a few minutes. If not locked, an attachment could break free and roll back down the loader arms or fall onto a bystander.
- Evaluate the terrain to determine what accessories and attachments are needed to perform the job properly and safely. Only use accessories and attachments approved by the manufacturer.
- Slow down and use caution when making turns and when changing directions on slopes.
- Never operate with the guards not securely in place. Be sure all interlocks are attached, adjusted properly, and functioning property.
- Do not change the engine governor setting or over speed the engine.
- Stop on level ground, lower implements, disengage the auxiliary hydraulics, engage parking brake, shut off the engine before leaving the operator's position for any reason.
- Keep hands and feet away from moving attachments.
- Look behind and down before backing up to be sure of a clear path.
- Never carry passengers and keep pets and bystanders away.
- Never leave a running traction unit unattended. Always lower the loader arms, stop the engine, set the parking brake, and remove the key before leaving.
- Do not carry a load with the arms raised. Always carry loads as close to the ground as possible while being able to avoid obstacles in the drive path.
- Do not over-load the attachment and always keep the load level when raising the loader arms to avoid injury to self and other workers in the area.
- Try to go around obstacles, rather than over or through them.
- Stay as far away from creeks, gullies and ravines as the banks could be steep. Otherwise, the earth could shear and send the skid steer crashing to the bottom or water.

Trainee Name (print)		Signature of Trainee	
Instructor Name		Date of Training	
Scan To:	Safety/Training/Equipment/Skid Steer Safety w/Attachments-YYYY-MM-DD		
Revision # 002-16 KRR			

Title of Training	SKID STEER TRAINING W/ ATTACHMENTS	
Equipment Info.	MAKE/TYPER/SIZE/MODEL	
Material Needed	Operations Manual-Skid Steer for Hands on Training- Open Area to Perform Hands On-Orange Cones for Serpentine Course	<b>Hands On Session-</b> All participants will be required to perform a pre-operational inspection and operating control demonstration. A work assignment must be performed using the loader bucket in a variety of applications, while traveling and turning with the bucket loaded and empty.



### Slope Operation

- Avoid steep slopes and rough terrain. Always travel up and down slopes, never across.
- Slow down and use extra care on hillsides. Be sure to travel in the recommended direction on hillsides. Turf conditions can affect the machine’s stability.
- Slopes are a major factor related to loss-of-control and tip-over accidents, which can result in severe injury or death. All slopes require extra caution.
- Do not operate the traction unit on hillsides or slopes exceeding the angles recommended in the Stability and those in the attachment operator’s manual.
- **Operate up and down slopes with the heavy end of the traction unit uphill.**
- An empty bucket will make the rear of the traction unit the heavy end, and a full bucket will make the front of the traction unit the heavy end. Most other attachments will make the front of traction unit the heavy end.

### Work Efficiently

- Drive slowly into the material pile, then raise the front of the attachment. Back away with the load in the tilted-up bucket or fork.
- Drive to the unloading site with loader arms down. Stop, raise the arms, and drive forward slowly until the bucket is just over the spreader or pile.
- Use the hydraulics to keep the attachment level while raising the lift arms at a slow, even rate. Be prepared to lower the load quickly if the skid steer becomes unstable.

Trainee Name (print)		Signature of Trainee	
Instructor Name		Date of Training	
Scan To:	Safety/Training/Equipment/Skid Steer Safety w/Attachments-YYYY-MM-DD		
Revision # 002-16 KRR			

Title of Training	SKID STEER TRAINING W/ ATTACHMENTS	
Equipment Info.	MAKE/TYPER/SIZE/MODEL	
Material Needed	Operations Manual-Skid Steer for Hands on Training- Open Area to Perform Hands On-Orange Cones for Serpentine Course	<b>Hands On Session-</b> All participants will be required to perform a pre-operational inspection and operating control demonstration. A work assignment must be performed using the loader bucket in a variety of applications, while traveling and turning with the bucket loaded and empty.

## ATTACHMENTS

### Augers



Powered augers are used predominantly in the agriculture, landscaping, construction, and utility industries. They are commonly used to drill holes for pilings, utility poles, light poles, and fence posts. The auger may be mounted on a variety of equipment or vehicles that may be ridden on or walked behind.

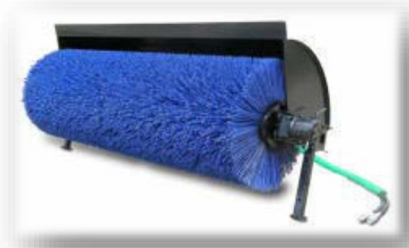
### Safety Measures

- Follow the instructions in the manufacturer's operating and preventive maintenance manual.
- Conduct daily pre-task meetings to ensure that all employees are aware of the correct procedures to prevent an unwanted incident and any hazards associated with the job task.
- Look for obstacles that may need to be removed. Hand digging may verify the presence or absence of underground material, including utilities.
- Prior to drilling, cut a hole in the landscape fabric sufficiently larger than the diameter of the auger to prevent contact or entanglement with the fabric.
- Except for the operator, employees should not be near the auger when it is operating.
- Employees using hand tools should not move or remove spoil-pile while the auger is operating.
- The operator should sit or stand at the operator's station while operating the auger.
- Do not modify the operator's station or disable safety controls beyond manufacturer's recommendations (for example: hold-to-run or seat switch controls).
- Remain a safe distance (a minimum of 10 feet) from the auger when helping the operator.

Trainee Name (print)		Signature of Trainee	
Instructor Name		Date of Training	
Scan To:	Safety/Training/Equipment/Skid Steer Safety w/Attachments-YYYY-MM-DD		
Revision # 002-16 KRR			

Title of Training	SKID STEER TRAINING W/ ATTACHMENTS	
Equipment Info.	MAKE/TYPER/SIZE/MODEL	
Material Needed	Operations Manual-Skid Steer for Hands on Training- Open Area to Perform Hands On-Orange Cones for Serpentine Course	<b>Hands On Session-</b> All participants will be required to perform a pre-operational inspection and operating control demonstration. A work assignment must be performed using the loader bucket in a variety of applications, while traveling and turning with the bucket loaded and empty.

## Sweeper attachment



## Safety Measures

- After attaching to your skid steer loader, visually inspect your lock-on pins to ensure that the angle broom is locked onto your skid steer loader. Remember, the angle broom is made of all steel components and rotating parts that could be dangerous if not properly attached.
- Keep all nuts, bolts, and screws tight and be sure the equipment is in safe operating condition and check the broom mounting bolts for proper tightness at frequent intervals.
- Reduce speeds on slopes and make turns gradually to prevent tipping or loss of control. Exercise extreme caution while making turns on slopes.
- NEVER make sudden turns
- NEVER carry passengers on an angle broom.
- NEVER leave the angle broom unattended in a raised position.
- ALWAYS stop and inspect both the skid steer loader and broom for damage after striking a foreign object. Any damage should be repaired prior to restarting the skid steer loader engine and resuming sweeping.
- Sweep only in daylight or well-lit artificial light.
- When working under the cowling of the angle broom, always securely block it up to reduce the risk of falling. (Use stands attached to broom.)
- Stay alert for holes or drop-offs on all terrains.
- NEVER operate your angle broom raised more than two (2) feet.
- ALWAYS operate with safety in mind.
- NEVER allow personnel to stand in front of an operating broom or in the path of the flying debris.
- KEEP CHILDREN AWAY FROM THE SWEEPING AREA AT ALL TIMES.
- NEVER store on ground with weight on broom. This will cause warping of bristles. ALWAYS store on stands keeping broom bristles off ground.

Trainee Name (print)		Signature of Trainee	
Instructor Name		Date of Training	
Scan To:	Safety/Training/Equipment/Skid Steer Safety w/Attachments-YYYY-MM-DD		
Revision # 002-16 KRR			

Title of Training	SKID STEER TRAINING W/ ATTACHMENTS	
Equipment Info.	MAKE/TYPER/SIZE/MODEL	
Material Needed	Operations Manual-Skid Steer for Hands on Training- Open Area to Perform Hands On-Orange Cones for Serpentine Course	<b>Hands On Session-</b> All participants will be required to perform a pre-operational inspection and operating control demonstration. A work assignment must be performed using the loader bucket in a variety of applications, while traveling and turning with the bucket loaded and empty.

### Debris discharge warnings

- Angle Brooms discharge debris out the front of the machine. When sweeping with the angle broom, NEVER discharge material toward bystanders.
  - All bystanders must be AT LEAST 75 feet away when operating the angle broom.
  - NEVER allow bystanders near the machine while it is in operation.
- ALWAYS clear the sweeping area of objects (bottles, rocks, fencing, wire, etc.) that may be picked up and thrown.
- When sweeping with the angle broom ALWAYS use a shatterproof cab door or the 3/8” thick Poly Carbonate safety door optionally available from Star Industries.
- The door is used not only to protect the operator from flying debris, but also from overhanging or protruding objects (tree limbs, rebar, vines, etc.) from entering the cab and causing operator injury.

### Rotating parts warnings

- NEVER place hands or feet under the angle broom cowling or near the broom system while the unit is in operation.
- ALWAYS disengage power to the angle broom and shut the skid steer loader engine off prior to leaving the operator’s cab or performing any inspection or maintenance to either the angle broom or the skid steer loader.
- NEVER articulate (roll) the cowling downward to a degree that exposes the moving parts.

Trainee Name (print)		Signature of Trainee	
Instructor Name		Date of Training	
Scan To:	Safety/Training/Equipment/Skid Steer Safety w/Attachments-YYYY-MM-DD		
Revision # 002-16 KRR	Page 6 of 10		

Title of Training	SKID STEER TRAINING W/ ATTACHMENTS	
Equipment Info.	MAKE/TYPER/SIZE/MODEL	
Material Needed	Operations Manual-Skid Steer for Hands on Training- Open Area to Perform Hands On-Orange Cones for Serpentine Course	<b>Hands On Session-</b> All participants will be required to perform a pre-operational inspection and operating control demonstration. A work assignment must be performed using the loader bucket in a variety of applications, while traveling and turning with the bucket loaded and empty.

### Breaker attachment



### Safety Measures

- Do not operate the breaker until you have read this manual and thoroughly understand all safety, operation and maintenance instructions, including completing a training class.
- When operating the breaker, you must use ear protection, eye protection, and breathing protection.
- The operator must be familiar with all prohibited work areas such as excessive slopes and dangerous terrain conditions.
- Ensure that all maintenance procedures recommended in this manual are completed before using the equipment.
- The operator must not operate the breaker or carrier if any people are within the area where they may be injured by flying debris or movement of the equipment.
- Operate the breaker in accordance with all laws and regulations which affect you, your equipment, and the work site.
- Do not operate the breaker until you have read the manufacturer’s equipment manual and thoroughly understand all safety, operation and maintenance instructions.
- Establish a training program for all operators to ensure safe operation.
- Do not operate the tool unless thoroughly trained or under the supervision of an instructor.
- Become familiar with the carrier controls before operating the carrier and the breaker.
- While learning to operate the breaker and carrier, do so at a slow pace. If necessary, set the carrier mode selector to the slow position.

### BREAKER ATTACHMENT continued

Trainee Name (print)		Signature of Trainee	
Instructor Name		Date of Training	
Scan To:	Safety/Training/Equipment/Skid Steer Safety w/Attachments-YYYY-MM-DD		
Revision # 002-16 KRR			

Title of Training	SKID STEER TRAINING W/ ATTACHMENTS	
Equipment Info.	MAKE/TYPER/SIZE/MODEL	
Material Needed	Operations Manual-Skid Steer for Hands on Training- Open Area to Perform Hands On-Orange Cones for Serpentine Course	<b>Hands On Session-</b> All participants will be required to perform a pre-operational inspection and operating control demonstration. A work assignment must be performed using the loader bucket in a variety of applications, while traveling and turning with the bucket loaded and empty.

- Make sure all controls (levers and pedals) are in the NEUTRAL position before starting the carrier.
- While operating the breaker and carrier, always keep hands and feet on the controls.
- Before leaving the carrier, always lower the boom and ensure the carrier is stable. Never leave the machine with the engine running. ALWAYS ENGAGE THE PARKING BRAKE.
- Stop the engine before attempting to make any repairs, adjustments or servicing to either the carrier or the breaker.
- Do not operate the tool at oil temperatures above 190 °F/88 °C. Operation at higher temperatures.

**Perform daily inspections.**

- Avoid blank hammering.
- DO NOT hammer in the same tool position for over thirty (30) seconds.
- DO NOT use the breaker to move material, pry material or any other use that it is not designed for.
- DO NOT submerge the breaker under water unless the breaker has been modified for underwater operation.
- Prevent contamination from entering the hydraulic hoses when mounting or dismounting the breaker from the machine.
- Maintain a clean hydraulic system.
- Replace the filter element with a new one and change hydraulic oil at the specified intervals.
- Operate the breaker carefully. DO NOT hit the boom of the machine with the breaker.
- In addition to the design and configuration of this implement, including Safety Signs and Safety Equipment, hazard control and accident prevention are dependent upon the awareness, concern, prudence, and proper training of personnel involved in the operation, transport, maintenance and storage of the machine.

**TRAINING**

Trainee Name (print)		Signature of Trainee	
Instructor Name		Date of Training	
Scan To:	Safety/Training/Equipment/Skid Steer Safety w/Attachments-YYYY-MM-DD		
Revision # 002-16 KRR			



Title of Training	SKID STEER TRAINING W/ ATTACHMENTS	
Equipment Info.	MAKE/TYPER/SIZE/MODEL	
Material Needed	Operations Manual-Skid Steer for Hands on Training- Open Area to Perform Hands On-Orange Cones for Serpentine Course	<b>Hands On Session-</b> All participants will be required to perform a pre-operational inspection and operating control demonstration. A work assignment must be performed using the loader bucket in a variety of applications, while traveling and turning with the bucket loaded and empty.

### Hands on field exercises

- Pre-trip
- Proper operations
- Shutdown

### Participant Field Exercises

Participants will partake in the following hands-on activities.

- Perform a pre-trip inspection of the mini skid steer loader.
- Demonstrate proper mini skid steer loader operations.
- Attaching and removing a bucket.
- Engaging and disengaging an approved lift-arm support.
- Completing a serpentine course.
- Completing a figure 8 course.

Review some of the "Do's" and "Don'ts" skid steer loader safety.

<p><b>DO:</b></p> <ul style="list-style-type: none"> <li>• <i>Fasten the seatbelt and employ the safety bar before starting a skid steer.</i></li> <li>• <i>Keep the attachment level while raising the loader arms.</i></li> <li>• <i>Keep the arms lowered while traveling.</i></li> <li>• <i>Point the loader's heavy end uphill when driving up and down a slope.</i></li> </ul>	<p><b>DON'T:</b></p> <ul style="list-style-type: none"> <li>• <i>Attempt to activate skid controls while standing outside of the cab.</i></li> <li>• <i>Drive across a slope with a skid steer.</i></li> <li>• <i>Use the skid steer bucket as a "work platform."</i></li> <li>• <i>Give anyone a ride in the skid steer's cab.</i></li> </ul>
--	--

### Important Notice

*This Safety Training Topic (STT) does not necessarily cover all possible hazards associated with this equipment and should be used in conjunction with equipment manual. It is designed as a guide to be used to compliment training in the field at Brieser Construction and as a reminder to users prior to equipment use. If you have any questions or concerns please contact any member of the Safety Department.*

Trainee Name (print)		Signature of Trainee	
Instructor Name		Date of Training	
Scan To:	Safety/Training/Equipment/Skid Steer Safety w/Attachments-YYYY-MM-DD		
Revision # 002-16 KRR			

Title of Training	SKID STEER TRAINING W/ ATTACHMENTS	
Equipment Info.	MAKE/TYPER/SIZE/MODEL	
Material Needed	Operations Manual-Skid Steer for Hands on Training- Open Area to Perform Hands On-Orange Cones for Serpentine Course	<b>Hands On Session-</b> All participants will be required to perform a pre-operational inspection and operating control demonstration. A work assignment must be performed using the loader bucket in a variety of applications, while traveling and turning with the bucket loaded and empty.

EMPLOYEE NAME (Print or Type)	EMPLOYEE SIGNATURE	TRADE	JOB TITLE
1.			
2.			
3.			
4.			
5.			
6.			
7.			
8.			
9.			
10.			
11.			
12.			
13.			
14.			
15.			
16.			

Trainee Name (print)		Signature of Trainee	
Instructor Name		Date of Training	
Scan To:	Safety/Training/Equipment/Skid Steer Safety w/Attachments-YYYY-MM-DD		
Revision # 002-16 KRR			